

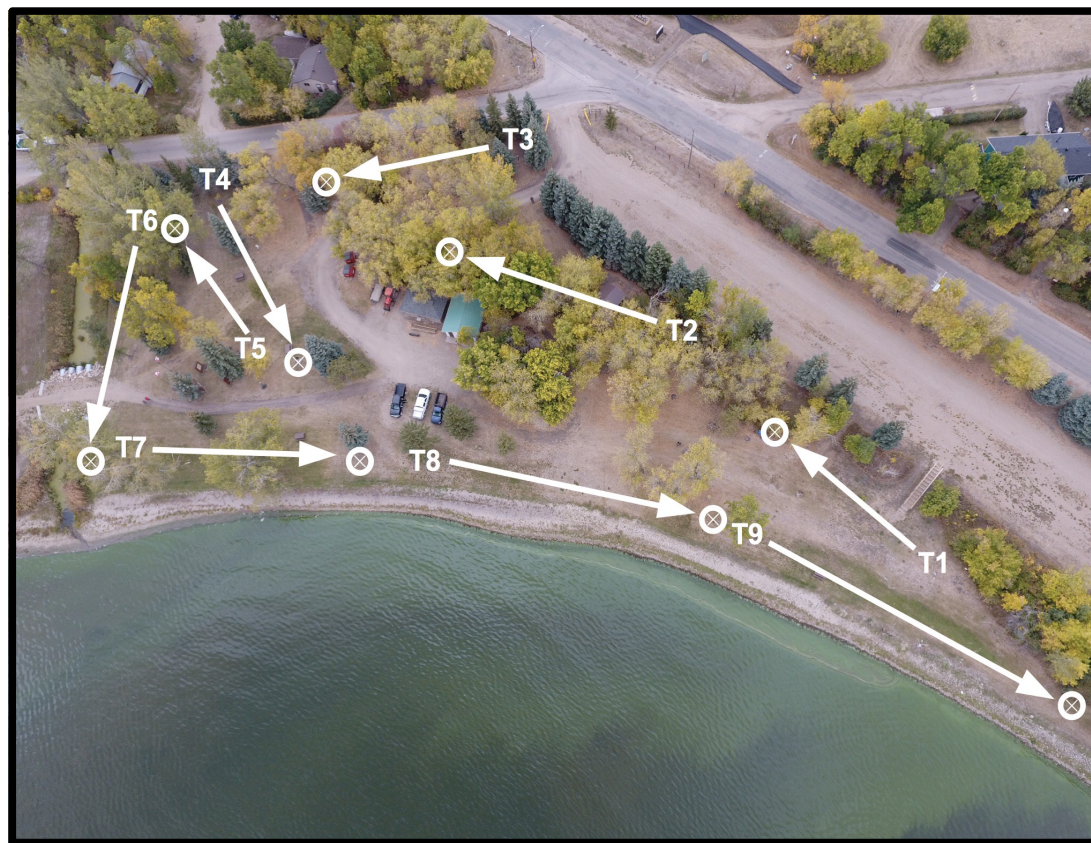
Katepwa Beach Disc Golf Course

Course Rules

- Never throw when players or park users are within range
- For safety, stand behind the player throwing
- Pick up trash and put in receptacles
- The creek, creek bank, lake, maintenance parking area, and Regina Avenue are out of bounds
- Discs landing in the creek or on the creek bank are retrievable with a retriever only. Players must not enter this area
- Players must play the course as they find it
- Natural obstacles must not be altered in any way

Disc Golf Rules

1. One stroke is counted on each throw. The goal is to play each hole in the fewest throws possible.
2. Each hole begins with a tee throw, each tee throw must be completed from the teeing area.
3. The player with the least amount of throws on the previous hole throws first.
4. After teeing off, the player whose disc is farthest from the hole throws first.
5. Throws are made directly behind the lie of the previous throw.
6. A player must not step past the lie on a follow through when within 33 feet (10 metres) of the basket.
7. A disc that comes to rest in the basket marks successful completion of the hole.
8. A disc that comes to rest above the ground is considered to be an unplayable lie.
9. The disc must be thrown from directly below and/or behind the unplayable lie.
10. If a disc goes out of bounds, the lie is considered to be the last place the disc was in bounds. Landing out of bounds incurs a penalty stroke.



Katepwa Disc Golf Course Equipment and Signs Donated to Katepwa Point Provincial Park by Katepwa & District Lions Club as a Lions Clubs International 100th Anniversary Legacy Project

Course design by Calvin Daniels and Trevor Lyons

Graphics by Megan L Garratt

